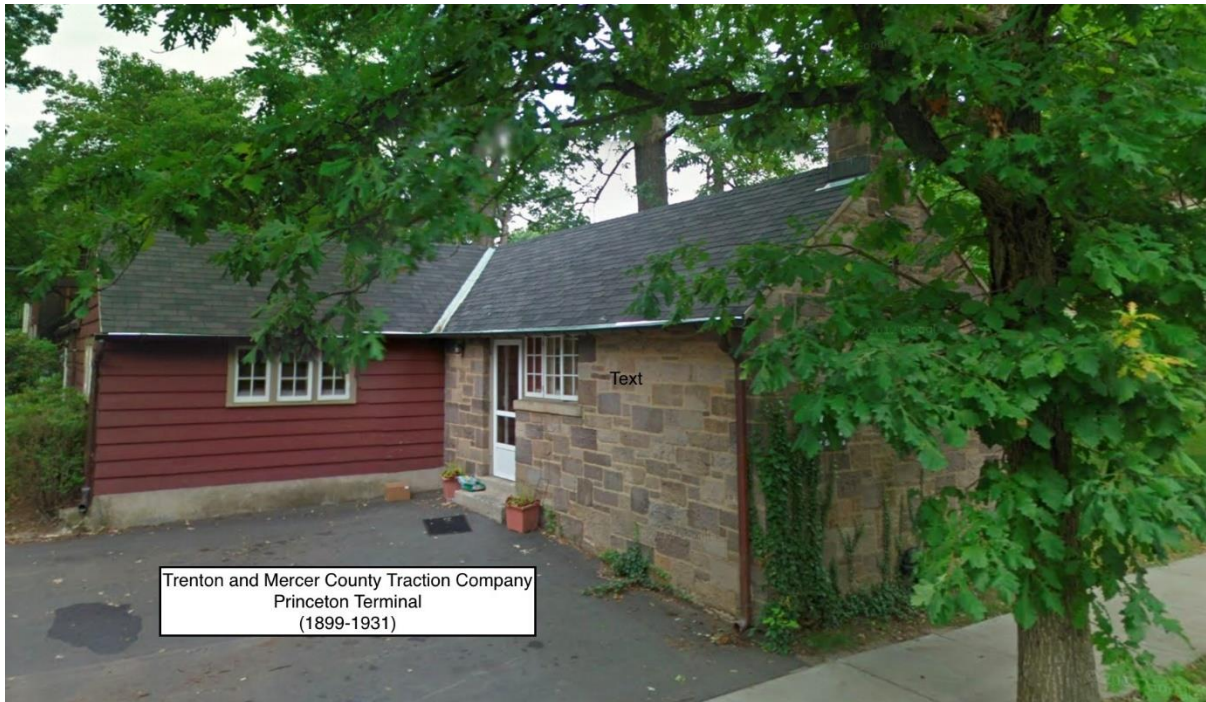


Perhaps the appropriate way to have concluded the recent article on the impact of the trolley line on the layout of the Springdale golf course would have been to show "the end of the line", i.e., the Princeton terminus of the *Trenton & Mercer County Traction Company* trolley line. So here it is still standing at 71 University Place.



For the last year of the trolley line's operation, you could have concluded your journey to Princeton and taken a few steps to enjoy a performance at the newly opened, McCarter Theatre. But in 1931, the seemingly more romantic trolley line was shut down and replaced by a more efficient mode of transportation which remains in use to this day - buses.

Stay tuned for more from the Springdale History Project as a next article will describe the first days of golf at the newly opened Stockton Farm course.